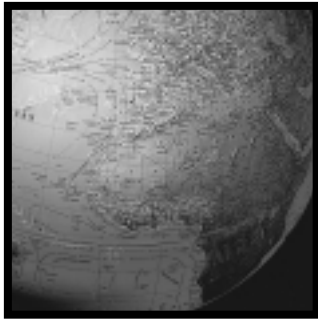


Picoflex™

The alternative way to connect  
1.27mm (.050") Ribbon Cable





# Picoflex™

Introduction .....	.5
Low Profile, IDT .....	.6
Low Profile, IDT, Board-In .....	.7
Low Profile Header .....	.8
SMT Header .....	.9
Right Angle, Low Profile Header .....	.10
Low Profile, High Temperature Header .....	.11
Vertical, Kinked PC Tails, Polarizing Peg Header .....	.12
Custom Cable Harnesses .....	.13 to 16
Application Tooling .....	.17 to 18



For more information, please see the last page of the catalog for the location nearest you or contact:

Americas Region  
Tel: 800-78MOLEX

Far East North Region  
Tel: 81-462-65-2324

Far East South Region  
Tel: 65-268-6868

European Region  
Tel: 49-89-413092-0

## INTRODUCTION



Picoflex™ IDT

To satisfy the ever increasing demands for miniaturisation, Molex developed the Picoflex™ IDT connector system, which offers up to 40% space savings compared to DIN 41651 connectors. The versatile low profile design makes it suitable for use in all traditional Ribbon Cable applications where space and real estate is at a premium.

A one piece moulded body with integral strain relief and cable guide removes the need for separate upper housings and enhances the applied cost savings. Two contact points with the male tab ensures excellent electrical contact, while the folded form of the female terminal in the IDT section gives four contact points with the cable. All headers are polarized both to the PCB and to the female connector. They have staggered solder tails on a 1.27mm pitch with 2.54mm between rows, which substantially reduces the risk of solder bridging.

There are two options on the cable connectors:

- 90327 IDT connector, which mates with all the header versions, and which has optional colour coding, with tin or select gold plating options
- 90584 board-in connector for permanent board connections (the staggered tail footprint is compatible with the standard male header)

There are five options on the header:

- 90325 standard through hole header, supplied with a choice of plating styles with optional tube packaging
- 90814 SMT header, featuring high temperature nylon insulator, a choice of plating styles and either tube or tape and reel blister packaging
- 90800 right angle header, has a low mated profile and is delivered with kinked solder tails with tube packaging
- 90779 SMC header has the same features as series 90325, but is moulded with a high temperature nylon insulator making it suitable for SMT processes
- 90715 header featuring kinked solder tails and a "Pacman" polarising and retention peg

And four standard options on the cable assembly:

- 92315 cable assembly can be ordered in lengths from 7cm - 120cm, featuring two 90327 connectors
- 92317 cable assembly can be ordered in lengths from 7cm - 120cm, featuring two 90327 connectors in Z-style
- 92318 cable assembly can be ordered in lengths from 7cm - 120cm, featuring one 90327 connector and one 90584 board-in connector in Z-style
- 92316 cable assembly can be ordered in lengths from 7cm - 120cm, featuring one 90327 receptacles and one 90584 board-in connector

A full range of non-standard options, including shorter cable lengths, can be supplied in larger volume. Please contact your Molex sales office.

The IDT connectors are designed to minimise installation cost and are complemented by an extensive range of application tools, from handtools for field repair and prototyping to fully automatic, state of the art, computer controlled harness making machines. Depending on the level of tooling chosen, machines are capable of manufacturing double-ended electrical and continuity tested cables. Daisy chaining is also possible.

The cable entry window on the IDT connectors has a scalloped profile which ensures precise positioning of the 1.27mm 26 to 28 AWG standard ribbon cable. The connector is terminated by the contact being pushed up into the housing and displacing the cable in the IDT section as well as positioning itself in the top of the housing to give an effective strain relief.

All parts are moulded in 94 V-O polyester with the SMT and SMT compatible headers produced in high temperature nylon.

Most parts are available in both tin and select gold options.

Parts are delivered in a variety of packaging formats to suit individual customer requirements. Depending on the product series, optional tubes and embossed tape & reel packaging are available.

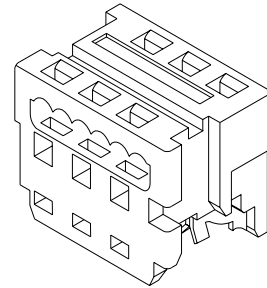
## FEATURES AND SPECIFICATIONS



# 1.27mm (.050") Pitch Picoflex™ PF-50 Connector

## 90327

### Low Profile, IDT



### Features and Benefits

- 1-piece housing assures precise positioning of cable
- Molded-in polarization
- 4 points of contact with ribbon cable
- Preloaded contacts
- Accepts 28 or 26 AWG (7 strand) ribbon cable
- Tape option for high-speed termination (contact Molex sales office)

### Reference Information

Product Specification: PS-99020-0011  
 Packaging: Bag (tape optional)  
 Tooling Information: See end of section  
 UL File No.: E29179  
 CSA File No.: LR19980-181  
 Mates With: 90325, 90715, 90779, 90800 and 90814  
 Use Molex Cable: 6800, 8863 and 40158  
 Designed In: Millimeters

### Electrical

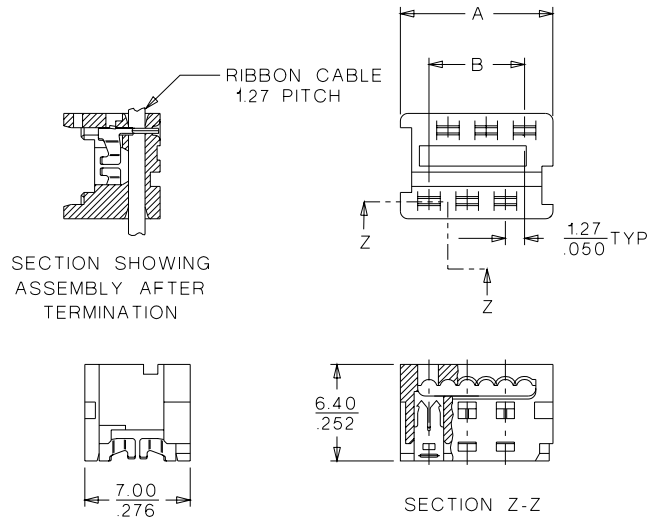
Voltage: 250V  
 Current: 1.2A  
 Contact Resistance: 15mΩ max.  
 Dielectric Withstanding Voltage: 750V rms  
 Insulation Resistance: 1000 MΩ min.

### Mechanical

Mating Force: 1.7N max. Tin/Lead and  
 1.1N max. Gold  
 Unmating Force: 0.25N min. Tin/Lead and  
 0.25N min. Gold  
 Durability: 30 cycles max. Tin/Lead and  
 100 cycles max. Gold (using extraction tool)

### Physical

Housing: White polyester, UL 94V-0  
 Contact: Phosphor Bronze Alloy  
 Plating: See Table  
 Temperature: -40 to +105°C  
 Cable Accommodation: 26 and 28 AWG stranded



## ORDERING INFORMATION AND DIMENSIONS

Circuits	Order No.		Dimension	
	Plating 1	Plating 2	A	B
4	90327-0304	90327-3304	7.59 (.299)	3.81 (.150)
6	90327-0306	90327-3306	10.13 (.399)	6.35 (.250)
8	90327-0308	90327-3308	12.67 (.499)	8.89 (.350)
10	90327-0310	90327-3310	15.21 (.599)	11.43 (.450)
12	90327-0312	90327-3312	17.75 (.699)	13.97 (.550)
14	90327-0314	90327-3314	20.29 (.799)	16.51 (.650)
16	90327-0316	90327-3316	22.83 (.899)	19.05 (.750)
18	90327-0318	90327-3318	25.37 (.999)	21.59 (.850)
20	90327-0320	90327-3320	27.91 (1.099)	24.13 (.950)
26	90327-0326	90327-3326	35.53 (1.399)	31.75 (1.250)

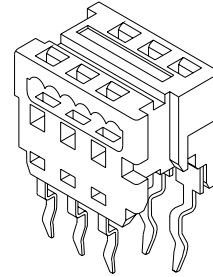
Plating 1: 3-6μm (120-240μ") Tin/Lead

Plating 2: 0.76μm (30μ") Select Gold



# 1.27mm (.050") Pitch Picoflex™ PF-50 Connector

## 90584 Low Profile, IDT Board-In



### FEATURES AND SPECIFICATIONS

#### Features and Benefits

- For permanent wire-to-board connections
- Kinked solder tails for board retention during solder process
- Fits same board layout pattern as male header
- Height from board when soldered and terminated only 6.40mm (.252")
- 2 points of contact in IDT section
- Accepts 26 to 28 AWG, 7 strands, ribbon cable

#### Reference Information

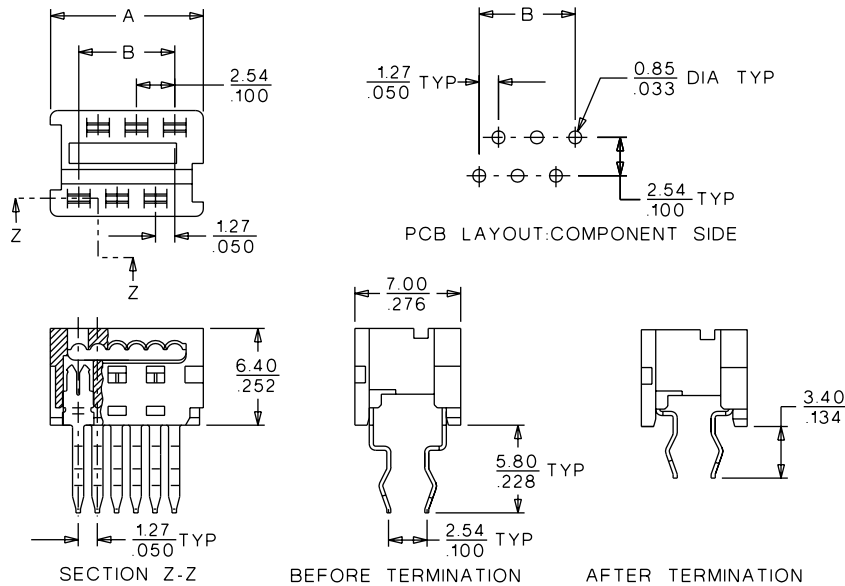
Product Specification: PS-99020-0011  
Packaging: Tube (2 options)  
Tooling Information: See end of section  
Designed In: Millimeters

#### Electrical

Voltage: 250V  
Current: 1.2A  
Contact Resistance: 15mΩ max.  
Dielectric Withstanding Voltage: 750V  
Insulation Resistance: 1000 MΩ min.

#### Physical

Housing: White polyester, UL 94V-0  
Contact: Phosphor Bronze Alloy  
Plating: Tin/Lead 1-3μm (.040-.118μ") over Nickel  
Temperature: -40 to +105°C



### ORDERING INFORMATION AND DIMENSIONS

Circuits	Order No.		Dimension	
	Individual Tube	Stacked Tube	A	B
4	90584-1304	90584-2304	7.59 (.299)	3.81 (.150)
6	90584-1306	90584-2306	10.13 (.399)	6.35 (.250)
8	90584-1308	90584-2308	12.67 (.499)	8.89 (.350)
10	90584-1310	90584-2310	15.21 (.599)	11.43 (.450)
12	90584-1312	90584-2312	17.75 (.699)	13.97 (.550)
14	90584-1314	90584-2314	20.29 (.799)	16.51 (.650)
16	90584-1316	90584-2316	22.83 (.899)	19.05 (.750)
18	90584-1318	90584-2318	25.37 (.999)	21.59 (.850)
20	90584-1320	90584-2320	27.91 (1.099)	24.13 (.950)
26	90584-1326	90584-2326	35.53 (1.399)	31.75 (1.250)

Note: Stacked tube is a group of 7 individual tubes in a stack

## FEATURES AND SPECIFICATIONS

### Features and Benefits

- Polarizing side posts and PCB pegs
- Stamped contacts with in-line, flat blades
- 2 points of contact with female terminal
- Rigid, staggered solder tails
- Friction lock
- Tube option packaging for robotic delivery (contact Molex sales office)

### Reference Information

Product Specification: PS-99020-0011  
 Packaging: Bag or tube  
 UL File No.: E29179  
 CSA File No.: LR19980-181  
 Mates With: 90327  
 Designed In: Millimeters

### Electrical

Voltage: 250V  
 Current: 1.2A  
 Contact Resistance: 15mΩ max.  
 Dielectric Withstanding Voltage: 750V rms  
 Insulation Resistance: 1000 MΩ min.

### Mechanical

Contact Retention to Housing: 7N min.  
 Mating Force: 1.7N max. Tin/Lead and 1.1N Gold max.  
 Unmating Force: 0.25N min. Tin/Lead and 0.25N Gold min.  
 Durability: 30 cycles max. Tin/Lead and 100 cycles max. Gold (using extraction tool)

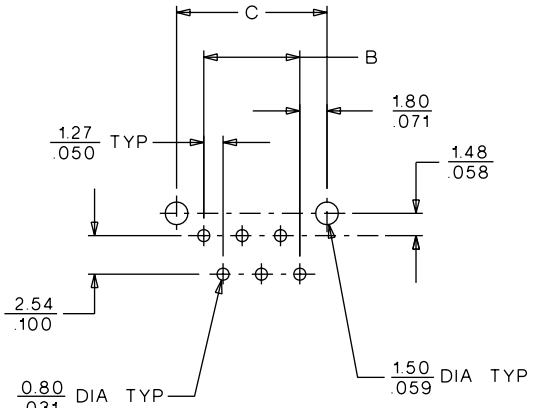
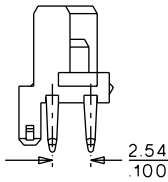
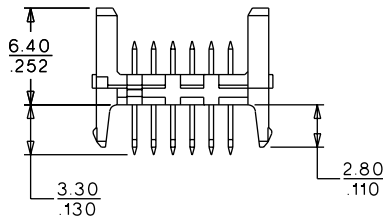
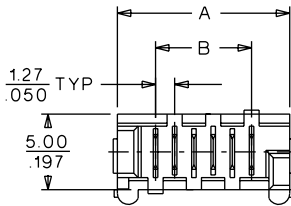
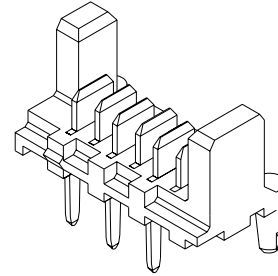
### Physical

Housing: Black, 15% glass-filled polyester, UL 94V-0  
 Contact: Brass  
 Plating: See Table  
 Temperature: -40 to +105°C



# 1.27mm (.050") Pitch Picoflex™ PF-50 Header

## 90325 Low Profile



PCB LAYOUT: SOLDER SIDE

## ORDERING INFORMATION AND DIMENSIONS

Circuits	Order No.		Dimension		
	Plating 1	Plating 2	A	B	C
4	90325-0004	90325-3004	8.86 (.349)	3.81 (.150)	7.41 (.292)
6	90325-0006	90325-3006	11.40 (.449)	6.35 (.250)	9.95 (.392)
8	90325-0008	90325-3008	13.94 (.549)	8.89 (.350)	12.49 (.492)
10	90325-0010	90325-3010	16.48 (.649)	11.43 (.450)	15.03 (.592)
12	90325-0012	90325-3012	19.02 (.749)	13.97 (.550)	17.57 (.692)
14	90325-0014	90325-3014	21.56 (.849)	16.51 (.650)	20.11 (.792)
16	90325-0016	90325-3016	24.10 (.949)	19.05 (.750)	22.65 (.892)
18	90325-0018	90325-3018	26.64 (1.049)	21.59 (.850)	25.19 (.992)
20	90325-0020	90325-3020	29.18 (1.149)	24.13 (.950)	27.73 (1.092)
26	90325-0026	90325-3026	36.80 (1.448)	31.75 (1.249)	35.35 (1.391)

Plating 1: 4-6μm (160-240μ") Tin/Lead

Plating 2: 0.76μm (30μ") Select Gold

## FEATURES AND SPECIFICATIONS

### Features and Benefits

- Polarizing side posts and PCB pegs
- Stamped SMT contacts with in-line, flat blades
- 2 points of contact with female terminal
- Rigid, staggered SMT solder tails
- Friction lock
- Optional retention bulb between circuits 12 to 26 only (contact Molex sales office)

### Reference Information

Product Specification: PS-99020-0011  
 Packaging: Tube or blister pack (contact Molex sales office)  
 Mates With: 90327  
 Designed In: Millimeters

### Electrical

Voltage: 250V  
 Current: 1.2A  
 Contact Resistance: 15mΩ max.  
 Dielectric Withstanding Voltage: 750V rms  
 Insulation Resistance: 1000 MΩ min.

### Mechanical

Contact Retention to Housing: 7N min.  
 Mating Force: 1.7N max. Tin/Lead and 1.1N max. Gold  
 Unmating Force: 0.25N min. Tin/Lead and 0.25N min. Gold  
 Durability: 30 cycles max. Tin/Lead and 100 cycles max. Gold (using extraction tool)

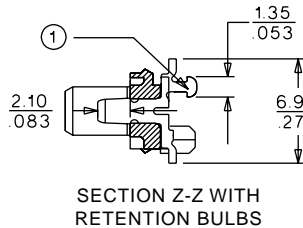
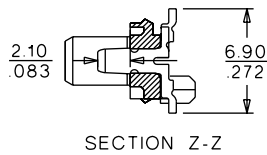
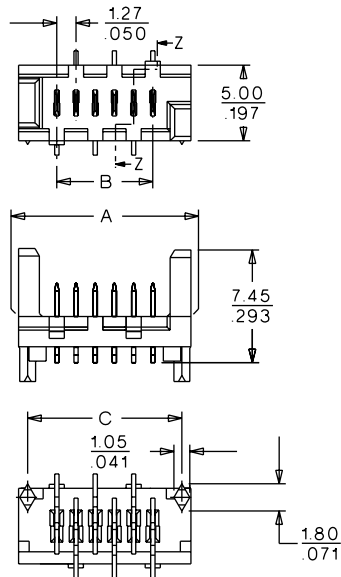
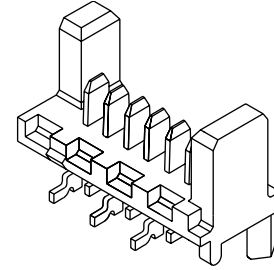
### Physical

Housing: Natural, 30% glass-filled nylon, UL 94V-0  
 Contact: Brass  
 Plating: See Table  
 Temperature: -40 to +105°C



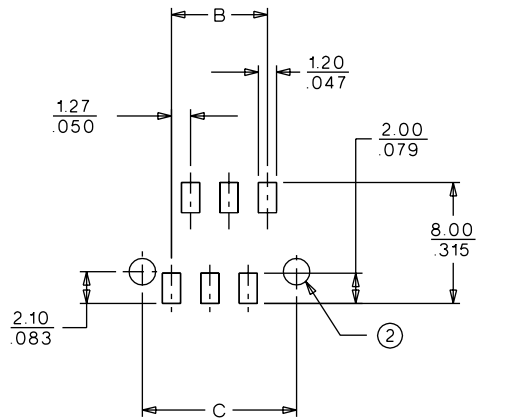
# 1.27mm (.050") Pitch Picoflex™ PF-50 Header

## 90814 SMT



① RETENTION BULBS OPTIONAL ON 12-26 CIRCUITS

② 1.75 DIA. TYPICAL FOR 90814-X0XX  
 2.00 DIA. TYPICAL FOR 90814-X2XX



PCB LAYOUT: SURFACE MOUNT SIDE  
 RECOMMENDED PCB THICKNESS: 1.60 / .063

## ORDERING INFORMATION AND DIMENSIONS

Circuits	Order No.				Dimension		
	Tube Pack		Blister Pack		A	B	C
	Plating 1	Plating 2	Plating 1	Plating 2			
4	90814-0004	90814-3004	90814-0204	90814-3204	8.86 (.349)	3.81 (.150)	7.66 (.302)
6	90814-0006	90814-3006	90814-0206	90814-3206	11.40 (.449)	6.35 (.250)	10.20 (.402)
8	90814-0008	90814-3008	90814-0208	90814-3208	13.94 (.549)	8.89 (.350)	12.74 (.502)
10	90814-0010	90814-3010	90814-0210	90814-3210	16.48 (.649)	11.43 (.450)	15.28 (.602)
12	90814-0012	90814-3012	90814-0212	90814-3212	19.02 (.749)	13.97 (.550)	17.82 (.702)
14	90814-0014	90814-3014	90814-0214	90814-3214	21.56 (.849)	16.51 (.650)	20.36 (.802)
16	90814-0016	90814-3016	90814-0216	90814-3216	24.10 (.949)	19.05 (.750)	22.90 (.902)
18	90814-0018	90814-3018	90814-0218	90814-3218	26.64 (1.049)	21.59 (.850)	25.44 (1.002)
20	90814-0020	90814-3020	90814-0220	90814-3220	29.18 (1.149)	24.13 (.950)	27.98 (1.102)
26	90814-0026	90814-3026	90814-0226	90814-3226	36.80 (1.449)	31.75 (1.250)	35.60 (1.402)

Plating 1: Tin/Lead 3-5µm (120-200µ")

Plating 2: Select Gold .76µm (30µ")

## FEATURES AND SPECIFICATIONS

### Features and Benefits

- Polarizing side posts
- Stamped contacts
- 2 points of contact with female terminal
- Kinked solder tails for board retention during solder process
- Friction lock

### Reference Information

Packaging: Tube  
 Tooling Information: See end of section  
 Mates With: 90327  
 Designed In: Millimeters

### Electrical

Voltage: 250V  
 Current: 1.2A  
 Contact Resistance: 15mΩ max.  
 Dielectric Withstanding Voltage: 750V  
 Insulation Resistance: 1000 MΩ min.

### Mechanical

Contact Retention to Housing: 7N min.  
 Mating Force: 1.7N min. Tin/Lead  
 Unmating Force: 0.25N max. Tin/Lead  
 Durability: 30 cycles max. Tin/Lead (using extraction tool)

### Physical

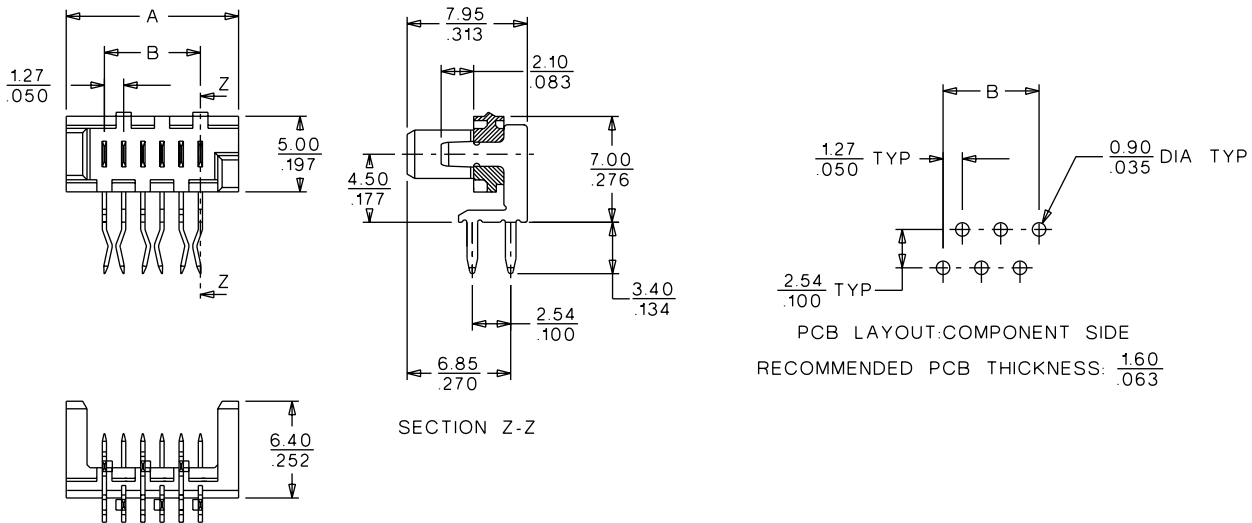
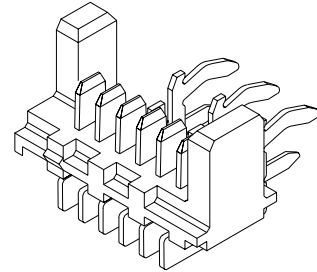
Housing: Black 15% glass-filled polyester, UL 94V-0  
 Contact: Brass  
 Plating: 3-5μm Tin/Lead over Nickel  
 Temperature: -40 to +105°C



# 1.27mm (.050") Pitch Picoflex™ PF-50 Header

## 90800

## Right Angle, Low Profile



## ORDERING INFORMATION AND DIMENSIONS

Circuits	Order No.	Dimension	
		A	B
4	90800-0004	8.86 (.349)	3.81 (.150)
6	90800-0006	11.40 (.449)	6.35 (.250)
8	90800-0008	13.94 (.549)	8.89 (.350)
10	90800-0010	16.48 (.649)	11.43 (.450)
12	90800-0012	19.02 (.749)	13.97 (.550)
14	90800-0014	21.56 (.849)	16.51 (.650)
16	90800-0016	24.10 (.949)	19.05 (.750)
18	90800-0018	26.64 (1.049)	21.59 (.850)
20	90800-0020	29.18 (1.149)	24.13 (.950)
26	90800-0026	36.80 (1.449)	31.75 (1.250)

## FEATURES AND SPECIFICATIONS

### Features and Benefits

- Polarizing side posts and PCB pegs
- Stamped contacts with in-line, flat blades
- 2 points of contact with female terminal
- Rigid, staggered solder tails
- Friction Lock
- High-temperature Surface Mount Compatible housing

### Reference Information

Product Specification: PS-99020-0011  
 Packaging: Bag or tube (contact Molex sales office)  
 Mates With: 90327  
 Designed In: Millimeters

### Electrical

Voltage: 250V  
 Current: 1.2A  
 Contact Resistance: 15mΩ max.  
 Dielectric Withstanding Voltage: 750V rms  
 Insulation Resistance: 1000 MΩ min.

### Mechanical

Contact Retention to Housing: 7N min.  
 Mating Force: 1.7N Tin/Lead and 1.1N Gold  
 Unmating Force: 0.25N Tin/Lead and 0.25N Gold  
 Durability: 30 cycles max. Tin/Lead and 100 cycles max. Gold  
 (using extraction tool)

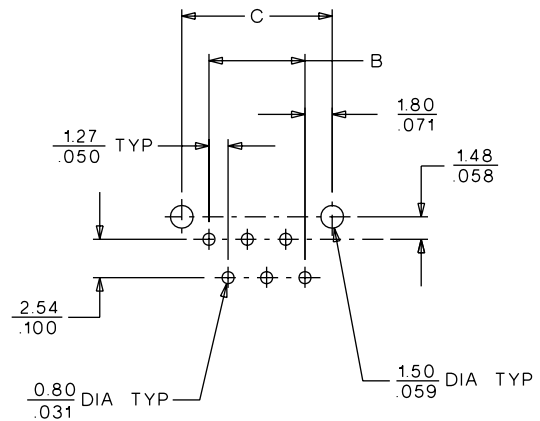
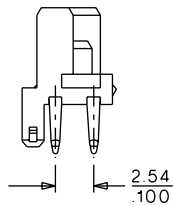
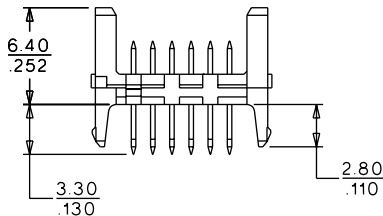
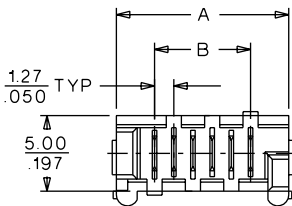
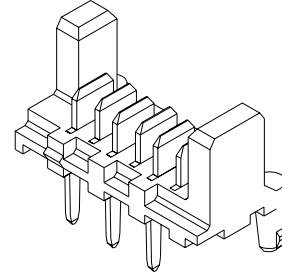
### Physical

Housing: Natural, 30% glass-filled nylon, UL 94V-0  
 Contact: Brass  
 Plating: See Table  
 Temperature: -40 to +105°C



# 1.27mm (.050") Pitch Picoflex™ PF-50 Header

## 90779 Low Profile High Temperature



PCB LAYOUT-SOLDER SIDE

## ORDERING INFORMATION AND DIMENSIONS

Circuits	Order No.		Dimension		
	Plating 1	Plating 2	A	B	C
4	90779-0001	90779-3001	8.86 (.349)	3.81 (.150)	7.41 (.292)
6	90779-0002	90779-3002	11.40 (.449)	6.35 (.250)	9.95 (.392)
8	90779-0003	90779-3003	13.94 (.549)	8.89 (.350)	12.49 (.492)
10	90779-0004	90779-3004	16.48 (.649)	11.43 (.450)	15.03 (.592)
12	90779-0005	90779-3005	19.02 (.749)	13.97 (.550)	17.57 (.692)
14	90779-0006	90779-3006	21.56 (.849)	16.51 (.650)	20.11 (.792)
16	90779-0007	90779-3007	24.10 (.949)	19.05 (.750)	22.65 (.892)
18	90779-0008	90779-3008	26.64 (1.049)	21.59 (.850)	25.19 (.992)
20	90779-0010	90779-3010	29.18 (1.149)	24.13 (.950)	27.73 (1.092)

Plating 1: Tin/Lead 4-6μm (160-240μ")

Plating 2: Select Gold .76μm (30μ")

Contact Molex for tube part numbers

## FEATURES AND SPECIFICATIONS

### Features and Benefits

- Polarizing side posts
- Optional polarizing peg for PCB orientation
- 2 points of contact with female terminal
- Kinked solder tails for PCB retention
- Friction lock
- Stamped contacts with in-line, flat blades

### Reference Information

Product Specification: PS-99020-0011  
 Packaging: Bag or tube (contact Molex sales office)  
 Mates With: 90327  
 Designed In: Millimeters

### Electrical

Voltage: 250V  
 Current: 1.2A  
 Contact Resistance: 15mΩ max.  
 Dielectric Withstanding Voltage: 750V  
 Insulation Resistance: 1000 MΩ min.

### Mechanical

Contact Retention to Housing: 7N min.  
 Mating Force: 1.7N max. Tin/Lead  
 Unmating Force: 0.25N min. Tin/Lead  
 Durability: 30 cycles max. Tin/Lead (using extraction tool)

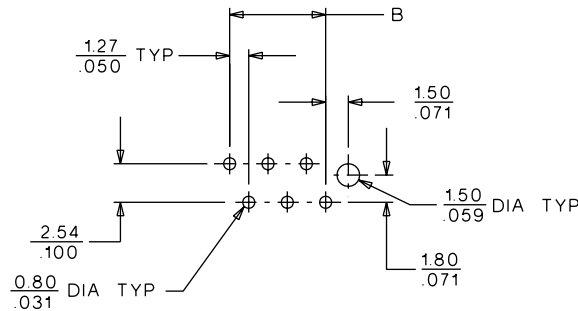
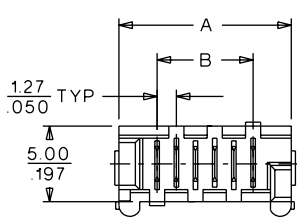
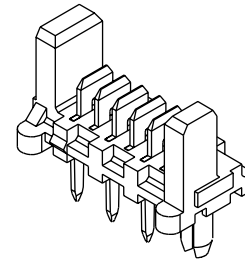
### Physical

Housing: Black polyester, UL 94V-0  
 Contact: Brass  
 Plating: 3–6μm\* Tin/Lead over Nickel  
 Temperature: -40 to +105°C

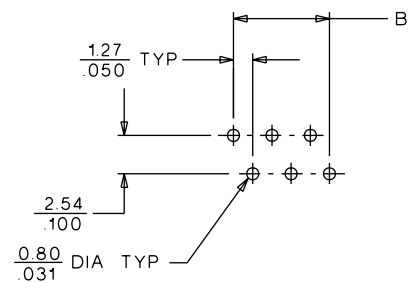


# 1.27mm (.050") Pitch Picoflex™ PF-50 Low Profile Header

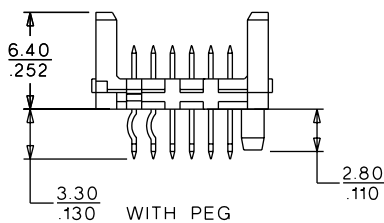
## 90715 Vertical, Kinked PC Tails Polarizing Peg



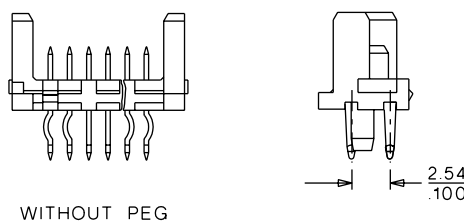
PCB LAYOUT: SOLDER SIDE  
WITH POLARISING HOLE



PCB LAYOUT: SOLDER SIDE  
WITHOUT POLARISING HOLE



WITH PEG



WITHOUT PEG

## ORDERING INFORMATION AND DIMENSIONS

Circuits	Order No.		Dimension	
	With PCB Peg	Without PCB Peg	A	B
4	90715-0008	90715-0007	8.86 (.349)	3.81 (.150)
6	90715-0005	90715-0003	11.40 (.449)	6.35 (.250)
8	90715-0004	90715-0001	13.94 (.549)	8.89 (.350)
10	90715-0002	90715-0009	16.48 (.649)	11.43 (.450)
12	90715-0011	90715-0010	19.02 (.749)	13.97 (.550)
14	90715-0013	90715-0012	21.56 (.849)	16.51 (.650)
16	90715-0006	90715-0014	24.10 (.949)	19.05 (.750)
18	90715-0016	90715-0015	26.64 (1.049)	21.59 (.850)
20	90715-0018	90715-0017	29.18 (1.149)	24.13 (.950)
26	90715-0020	90715-0019	36.80 (1.448)	31.75 (1.249)

## FEATURES AND SPECIFICATIONS

### Features and Benefits

- Cable assembly with two 90327 connectors
- Sizes 4 to 20 and 26 (see 90327)
- UL 2651, 28 AWG (7 strand) ribbon cable
- Lengths from 7 to 120cm

### Reference Information

Packaging: Bag

Mates With: 90325, 90800, 90814, 90715 and 90779

Designed In: Millimeters

### Electrical

Voltage: 250V

Current: 1.2A

### Mechanical

Mating Force: 1.7N max. Tin/Lead

Unmating Force: 0.25N min. Tin/Lead

Durability: 30 cycles max. Tin/Lead (using extraction tool)

### Physical

Housing: White polyester, UL 94V-0

Contact: Phosphor Bronze Alloy

Plating: 3–6µm<sup>2</sup> Tin/Lead

Temperature: -20 to +105°C

Insulation: Cable—Gray PVC

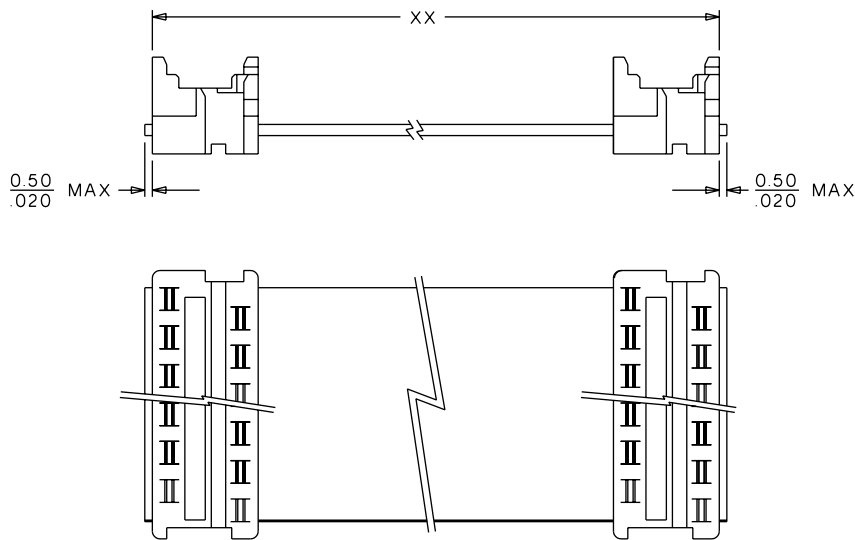
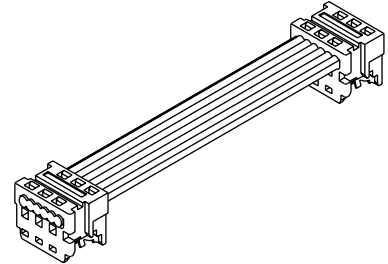
Wire Range: 28 AWG

See 90327 and 6800 cable pages for more specifications



# 1.27mm (.050") Pitch Picoflex™ PF-50 Custom Cable Harness

## 92315



## ORDERING INFORMATION AND DIMENSIONS

Circuits	Order No.
4	92315-04XX
6	92315-06XX
8	92315-08XX
10	92315-10XX
12	92315-12XX
14	92315-14XX
16	92315-16XX
18	92315-18XX
20	92315-20XX
26	92315-26XX

Length	XX
7–99cm	07–99
100cm	01
105cm	02
110cm	03
115cm	04
120cm	05

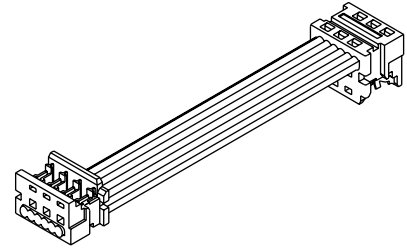
Replace XX with length in cm (min. 7cm, max. 120cm), see table

Example: 92315-0832 is a cable with two 90327-0308, 32cm long



# 1.27mm (.050") Pitch Picoflex™ PF-50 Custom Cable Harness

## 92317



### FEATURES AND SPECIFICATIONS

#### Features and Benefits

- Cable assembly with two 90327, Z-style connectors
- Sizes 4 to 20 and 26 (see 90327)
- UL 2651, 28 AWG (7 strand) ribbon cable
- Lengths from 7 to 120cm

#### Reference Information

Packaging: Bag

Mates With: 90325, 90800, 90814, 90715 and 90779

Designed In: Millimeters

#### Electrical

Voltage: 250V

Current: 1.2A

#### Mechanical

Mating Force: 1.7N max. Tin/Lead

Unmating Force: 0.25N min. Tin/Lead

Durability: 30 cycles max. Tin/Lead (using extraction tool)

#### Physical

Housing: White polyester, UL 94V-0

Contact: Phosphor Bronze Alloy

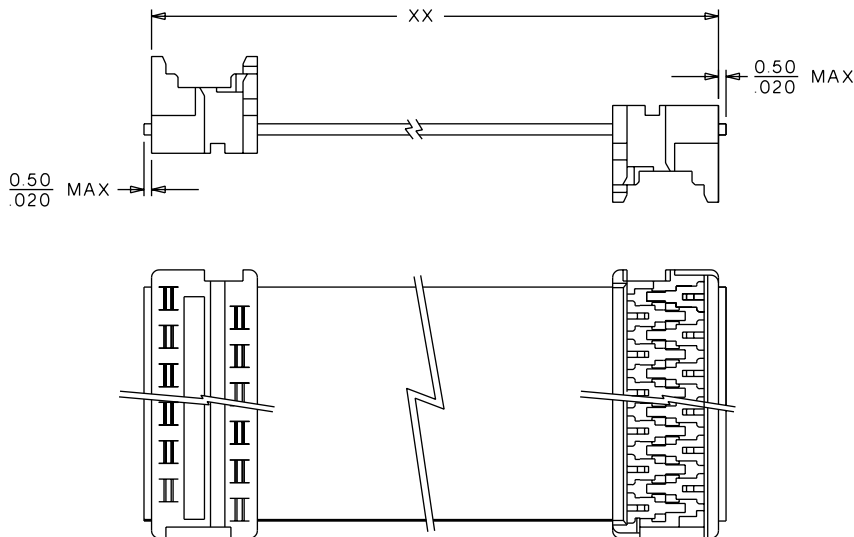
Plating: 3–6µm<sup>n</sup> Tin/Lead

Temperature: -20 to +105°C

Insulation: Cable—Gray PVC

Wire Range: 28 AWG

See 90327 and 6800 cable pages for more specifications



### ORDERING INFORMATION AND DIMENSIONS

Circuits	Order No.
4	92317-04XX
6	92317-06XX
8	92317-08XX
10	92317-10XX
12	92317-12XX
14	92317-14XX
16	92317-16XX
18	92317-18XX
20	92317-20XX
26	92317-26XX

Length	XX
7–99cm	07–99
100cm	01
105cm	02
110cm	03
115cm	04
120cm	05

Replace XX with length in cm (min. 7cm, max. 120cm), see table

Example: 92317-0832 is a cable with two 90327-0308, 32cm long

## FEATURES AND SPECIFICATIONS

### Features and Benefits

- Cable assembly with 90327 and 90584 connectors
- Sizes 4 to 20 and 26 (see 90327 and 90584)
- UL 2651, 28 AWG (7 strand) ribbon cable
- Lengths from 7 to 120cm

### Reference Information

Packaging: Bag

Mates With: 90325, 90800, 90814, 90715 and 90779

Designed In: Millimeters

### Electrical

Voltage: 250V

Current: 1.2A

### Mechanical

Mating Force: 1.7N max. Tin/Lead

Unmating Force: 0.25N min. Tin/Lead

Durability: 30 cycles max. Tin/Lead (using extraction tool)

### Physical

Housing: White polyester, UL 94V-0

Contact: Phosphor Bronze Alloy

Plating: 3–6µm<sup>2</sup> Tin/Lead

Temperature: -20 to +105°C

Insulation: Cable—Gray PVC

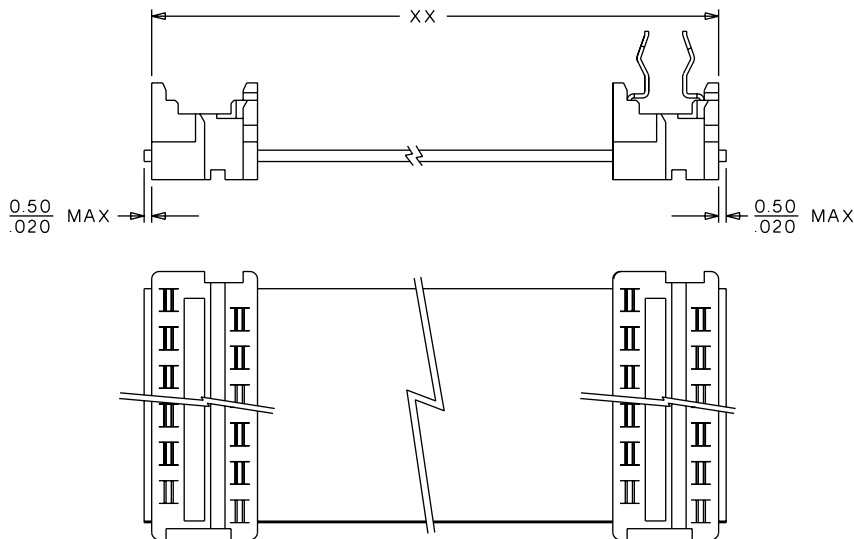
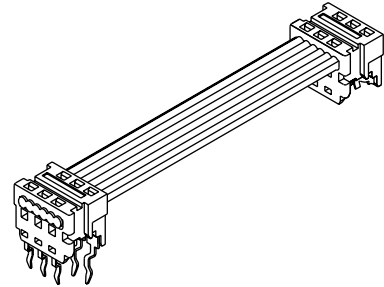
Wire Range: 28 AWG

See 90327, 90584 and 6800 cable pages for more specifications



# 1.27mm (.050") Pitch Picoflex™ PF-50 Custom Cable Harness

## 92316



## ORDERING INFORMATION AND DIMENSIONS

Circuits	Order No.
4	92316-04XX
6	92316-06XX
8	92316-08XX
10	92316-10XX
12	92316-12XX
14	92316-14XX
16	92316-16XX
18	92316-18XX
20	92316-20XX
26	92316-26XX

Length	XX
7–99cm	07–99
100cm	01
105cm	02
110cm	03
115cm	04
120cm	05

Replace XX with length in cm (min. 7cm, max. 120cm), see table

Example: 92316-0832 is a cable with 90327-0308 and 90584-2308, 32cm long

## FEATURES AND SPECIFICATIONS

### Features and Benefits

- Cable assembly with 90327 and 90584, Z-style connectors
- Sizes 4 to 20 and 26 (see 90327 and 90584)
- UL 2651, 28 AWG (7 strand) ribbon cable
- Lengths from 7 to 120cm

### Reference Information

Packaging: Bag

Mates With: 90325, 90800, 90814, 90715 and 90779

Designed In: Millimeters

### Electrical

Voltage: 250V

Current: 1.2A

### Mechanical

Mating Force: 1.7N max. Tin/Lead

Unmating Force: 0.25N min. Tin/Lead

Durability: 30 cycles max. Tin/Lead (using extraction tool)

### Physical

Housing: White polyester, UL 94V-0

Contact: Phosphor Bronze Alloy

Plating: 3–6 $\mu$ m<sup>n</sup> Tin/Lead

Temperature: -20 to +105°C

Insulation: Cable—Gray PVC

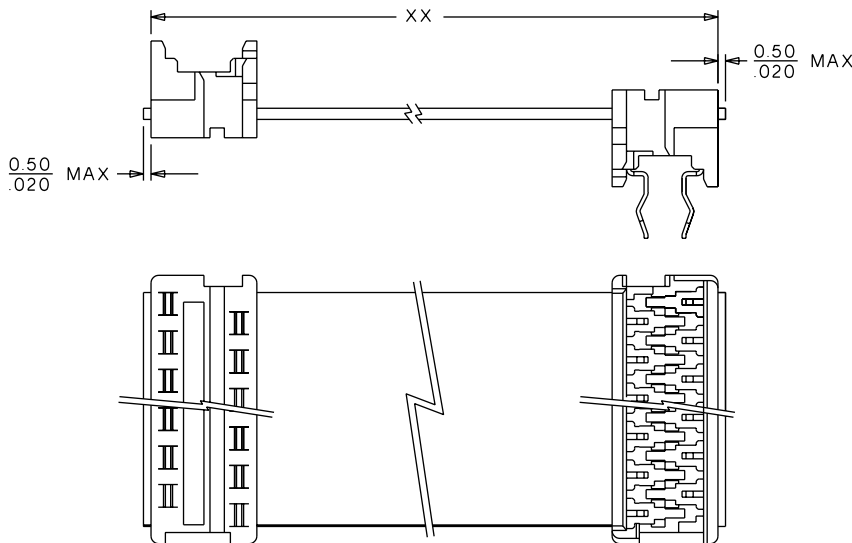
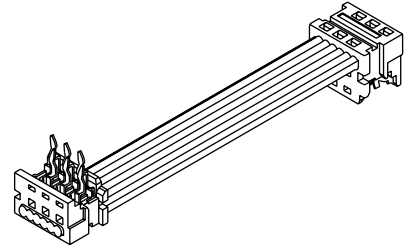
Wire Range: 28 AWG

See 90327, 90584 and 6800 cable pages for more specifications



# 1.27mm (.050") Pitch Picoflex™ PF-50 Custom Cable Harness

## 92318



## ORDERING INFORMATION AND DIMENSIONS

Circuits	Order No.
4	92318-04XX
6	92318-06XX
8	92318-08XX
10	92318-10XX
12	92318-12XX
14	92318-14XX
16	92318-16XX
18	92318-18XX
20	92318-20XX
26	92318-26XX

Length	XX
7–99cm	07–99
100cm	01
105cm	02
110cm	03
115cm	04
120cm	05

Replace XX with length in cm (min. 7cm, max. 120cm), see table

Example: 92318-0832 is a cable with 90327-0308 and 90584-2308, 32cm long



## FEATURES AND SPECIFICATIONS

### Features

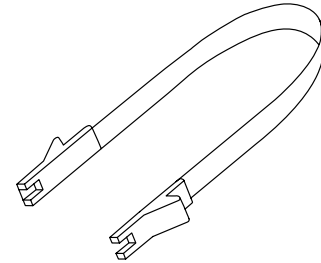
- Steel and plastic construction with moulded heads
- Long life spring steel handle
- Designed for "in the field" use, will help prevent damage to termination area and to connectors
- Suitable for all circuit sizes 4 to 26

This extraction tool is used to unmate the Picoflex connector 90327 from its header

### Specification

Size: (open) 105mm x 110mm x 12mm  
Weight: 0.05kg approximate

## Application Tooling Extraction Tool 69008-1070



## ORDERING INFORMATION

Description	Order No.	Connector
Picoflex Extraction Tool	69008-1070	90327

## FEATURES AND SPECIFICATIONS

### Features

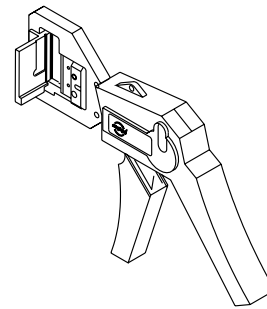
- Terminates Molex connectors 90327 and 90584 4 to 26 ckt
- Designed for prototype: Small batch and field repair applications
- Can terminate feed to or feed through applications

The 69008-1080 has parallel action with precision location nest, termination blades and cable guide. It offers a high quality method of termination for prototype/low volume production

### Specification

Size: 260 mm x 150mm x 50mm  
Weight: 0.75kg

## Hand Tool 69008-1080



## ORDERING INFORMATION

Description	Order No.	Connector
Picoflex Hand Tool for 4 to 26 circuits	69008-1080	90327/90584

## FEATURES AND SPECIFICATIONS

### Features

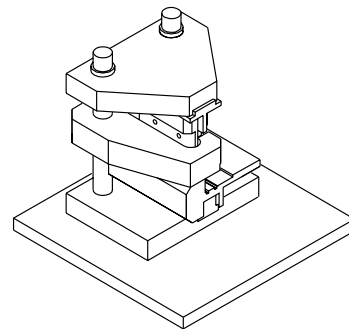
- Fully manual operation – requires no electrical or air supply
- Hand loading of connector and cable
- Cable guide
- Fits into arbor press number 69020-0660
- Optional connector clamp 69020-1935
- Feed to and feed through application
- Suitable for all circuit sizes 4 to 26
- Terminates 90327 and 90584 series

Allows manual termination of pre-cut ribbon cable in an Arbor press

### Specification

Weight: 1kg  
Dimensions: 155mm x 110mm x 90mm  
Working Services: none

## Arbor Press Module 69020-1902



## ORDERING INFORMATION

Description	Order No.	Connector
Arbor Press Module	69020-1902	90327/90584
Optional Connector Clamp	69020-1935	90327/90584

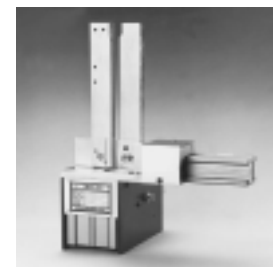
## FEATURES

### Features

- For Picoflex 90327 connector (4 to 26 circuits)
- Fully pneumatic
- Cable triggers termination
- Production rate: 520 per hour
- Magazine feed
- Cable guidance
- Quick adjustment for different circuit sizes

The PB14 offers a fast and efficient method to terminate the Picoflex 90327 connector. An operator loads the magazine with the Picoflex product and slides the ribbon cable into the connector. Once the ribbon cable is fully inserted, it automatically triggers the termination sequence which, as well as terminating that connector, indexes the next one into position.

## PB14 Pneumatic Terminator 69127-1001



## ORDERING INFORMATION

Description	Order No.	Connector
PB14 Terminator for 4 to 26 circuits	69127-1001	90327



## FEATURES AND SPECIFICATIONS

### Features

- Automatic tape feed which increases the production capabilities of the PB14 terminator
- Cable entry triggers termination
- Quick adjustment between circuit sizes
- Sensor automatically keeps magazine track full allowing the operator to concentrate on production
- Hand or bowl feed versions also available

### Specifications

Rate: Up to 2100 connectors per hour, dependent on operator speed and cable length

The PBT14 has an automatic tape feed which adds a very cost effective option to increase the production capabilities of the PB14 terminator. The connectors are placed on the reel holder and fed into the magazine. The tape is fixed onto the motor shaft. A sensor automatically keeps the magazine track full of connectors allowing the operator to concentrate on production.

## ORDERING INFORMATION

Description	Order No.	Connector
PB14T Terminator (220V) for 4 to 26 circuits	69127-1004	90327
PB14T Terminator (120V) for 4 to 26 circuits	69127-1024	90327

## Application Tooling PB14T Tape Feed Terminator 69127-1004 69127-1024



## FEATURES

- For Picoflex 90584
- Fully pneumatic
- Automatic connector reloading
- Tube feed with connector orientation
- Timer to ensure complete termination
- Cable entry triggers termination

The PB16 is for processing tube fed connectors/hand placed ribbon cable. Type 90584 staggered tails board in. I.D.T. with ribbon cable.

## ORDERING INFORMATION

Description	Order No.	Connector
PB16 Terminator	69127-1010	90584

## PB16 Tube Feed Pneumatic Terminator 69127-1010



## FEATURES AND SPECIFICATIONS

### Features

- Medium volume, with fully automatic means of termination
- Pneumatically acutated
- Continuity testing built in
- Wire straightener
- PLC control
- Harness collection tray

### Specifications

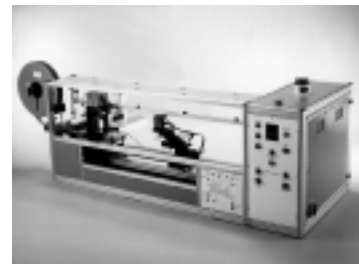
Weight: 140kg (308 lb)  
Electrical: 240V, 50 Hz single phase  
Pneumatics: Pressure—6 BAR (90psig)  
Consumption—6L per minute (0.22 CFM)  
Rate: Up to 360 harnesses per hour, dependent on operator speed and application

The Picoflex Desk Top machine has been developed in order to provide the medium volume user with a fully automated means of termination, while keeping the capital investment to a minimum. These two factors combined result in the lowest possible applied cost. The machine is pneumatically actuated and PLC controlled. A built-in continuity test facility ensures that each harness produced is of highest quality.

## ORDERING INFORMATION

Description	Order No.	Connector
Picoflex Desktop Machine	Contact Molex sales office	90327, 90584

## Picoflex™ Desktop (PDT) Machine





*Bringing People & Technology Together, Worldwide<sup>SM</sup>*

**Americas Headquarters**

Lisle, Illinois 60532 U.S.A.  
Tel: 1-800-78MOLEX  
Fax: 630-969-1352

**Far East North Headquarters**

Kanagawa, Japan  
Tel: 81-462-65-2324  
Fax: 81-462-65-2361

**Far East South Headquarters**

Jurong, Singapore  
Tel: 65-268-6868  
Fax: 65-265-6044

**European Headquarters**

Munich, Germany  
Tel: 49-89-413092-0  
Fax: 49-89-401527

**Corporate Headquarters**

2222 Wellington Court  
Lisle, Illinois 60532 U.S.A.  
Tel: 630-969-4550  
Fax: 630-969-1352

Visit our Web site at <http://www.molex.com>