

SPEAKER MODULES

AGENDA

01

SPEAKER BOXES

02

HOW TO MAKE IT REAL



01

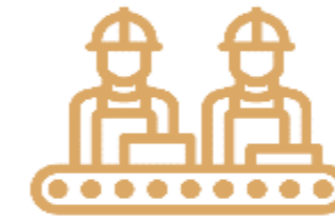
SPEAKER BOXES

SPEAKER BOX ADVANTAGES



DESIGN PHASE

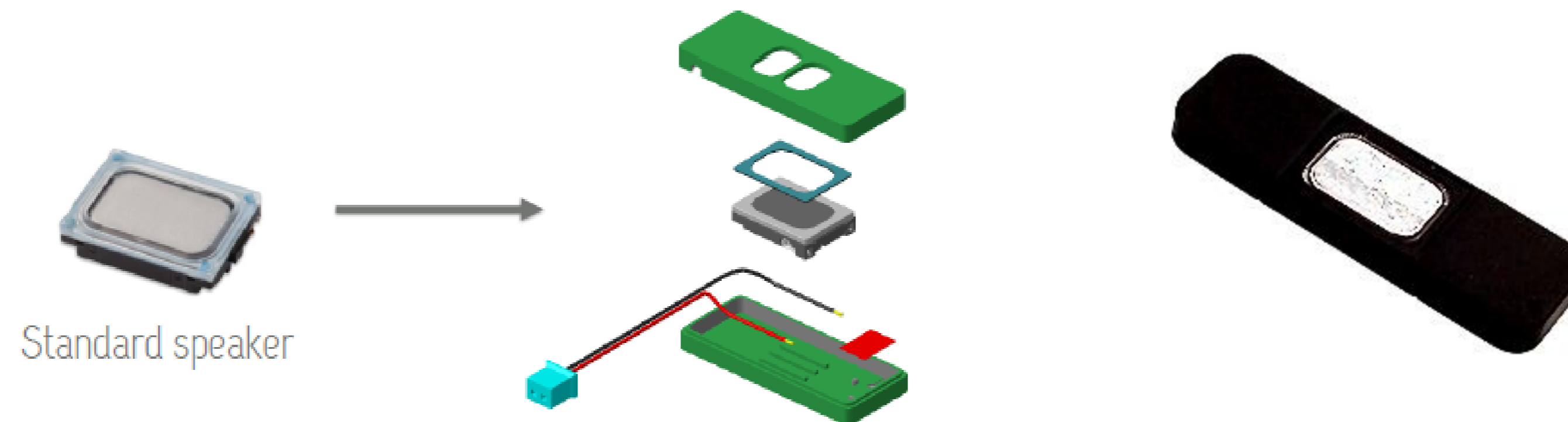
- **Controlled** back volume
- **Optimized** acoustic design
- Proper **level of ingress** implemented in front of the speaker
- **Easy integration**



PRODUCTION PHASE

- Reliable **quality** control
- **Easy handling** in production: Plug and Play solution
- **Acoustic homogeneity** from one end product to the other

- SELTECH offers complete speaker boxes design





STANDARD SPEAKER BOX

- Easy integration with standard shape and connectors – “off the shelf” box with customization possible
- Cost effective solution

Standard speaker box overview

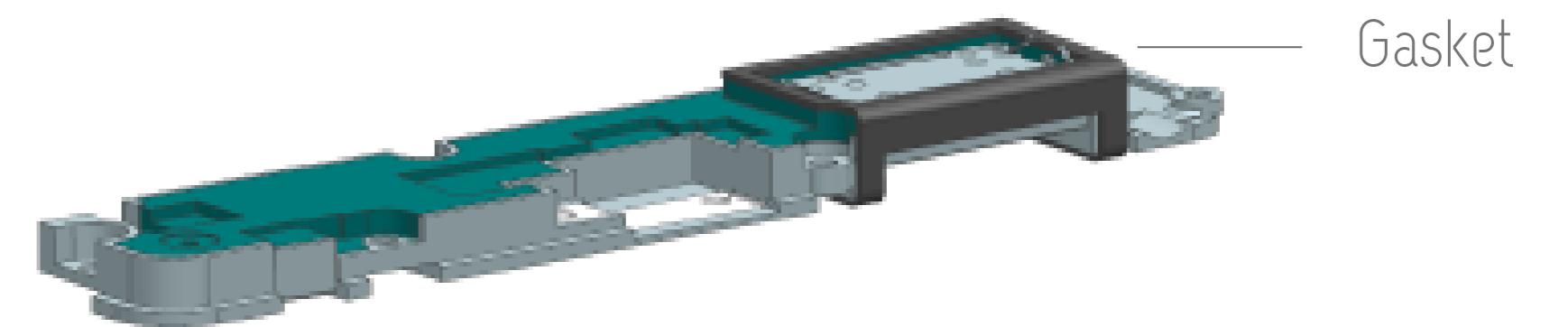
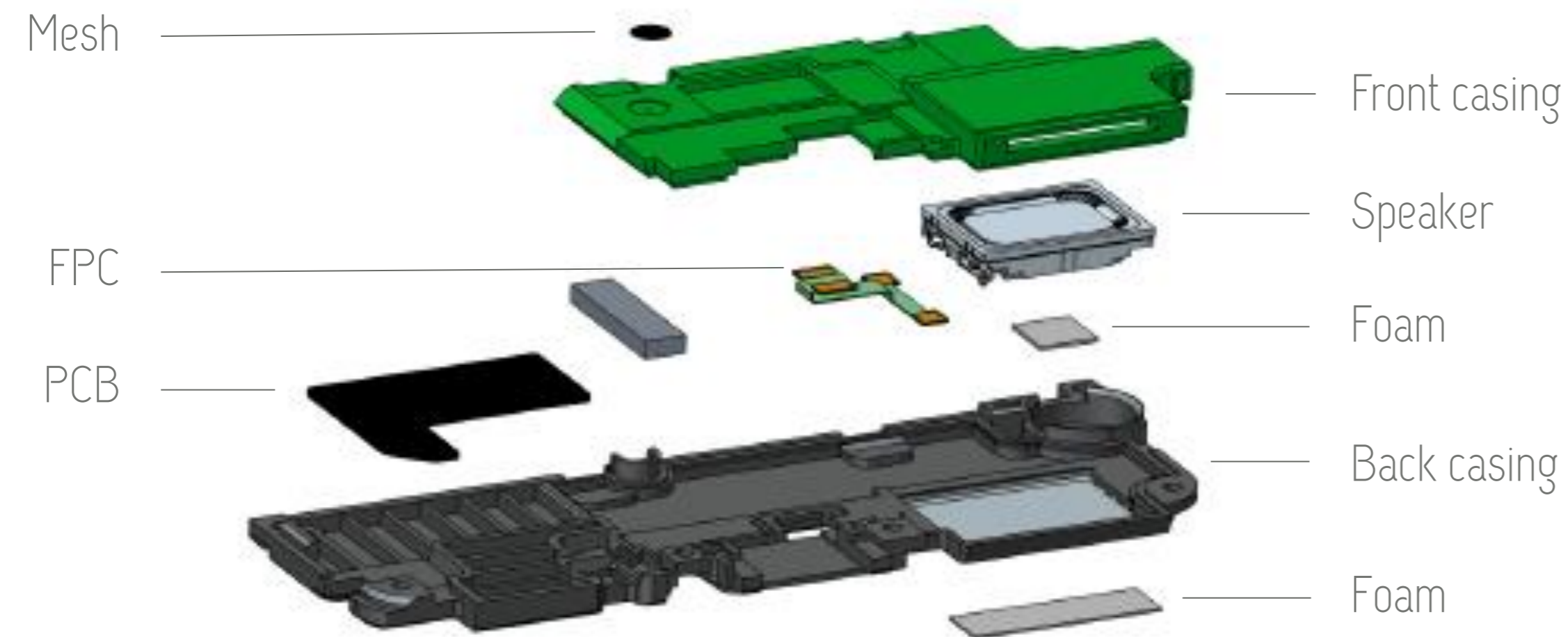


PN	Speaker inside	Picture	Wire	Connector	Dimension
BOXI-18082-2BI00	CR1511L030UN8-2		100 mm	No	40*12*4
BOXI-18082-2BI00GDA	CR1511L030UN8-2		100 mm	No	40*12*4
BOXI-18082-7SP	CR1511L030UN8-2		No	PCB	40*12*4
BOXI-18082-3B60CGDA	CR1511L030UN8-2		60 mm	Molex 51021-0300	40*12*7.5
BOXI-18082-BI00C	CR1511L030UN8-2		100 mm	JST BHSR-02VS-1	40*12*4
BOXI-18082-BI00	CR1511L035UN8		100 mm	No	40*12*4
BOXI-18082-IOC	BR1511L035UN6		100 mm	DF13-2S-1.25C	40*12*4.69
BOXI-14074-4	BR1511L035UN6		18 mm	No	30*16*6



CUSTOM SPEAKER BOX

- Perfect match with product design – can integrate one of your visible part or be hidden
- Custom features, components
- Dedicated support from design to mass-production by Seltech technical team

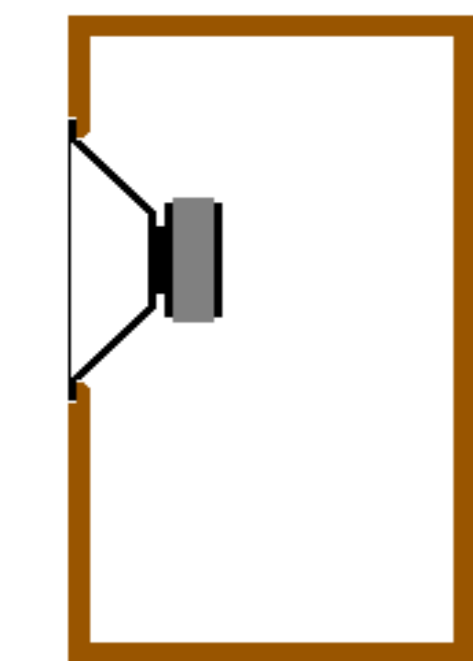




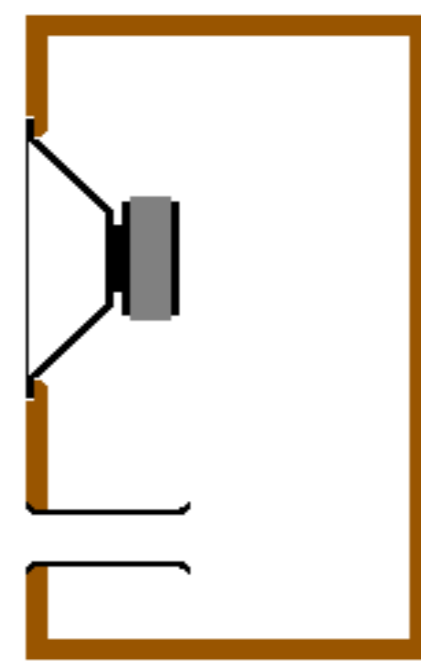
IMPROVED PERFORMANCES

Bass reflex implementation

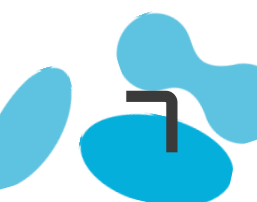
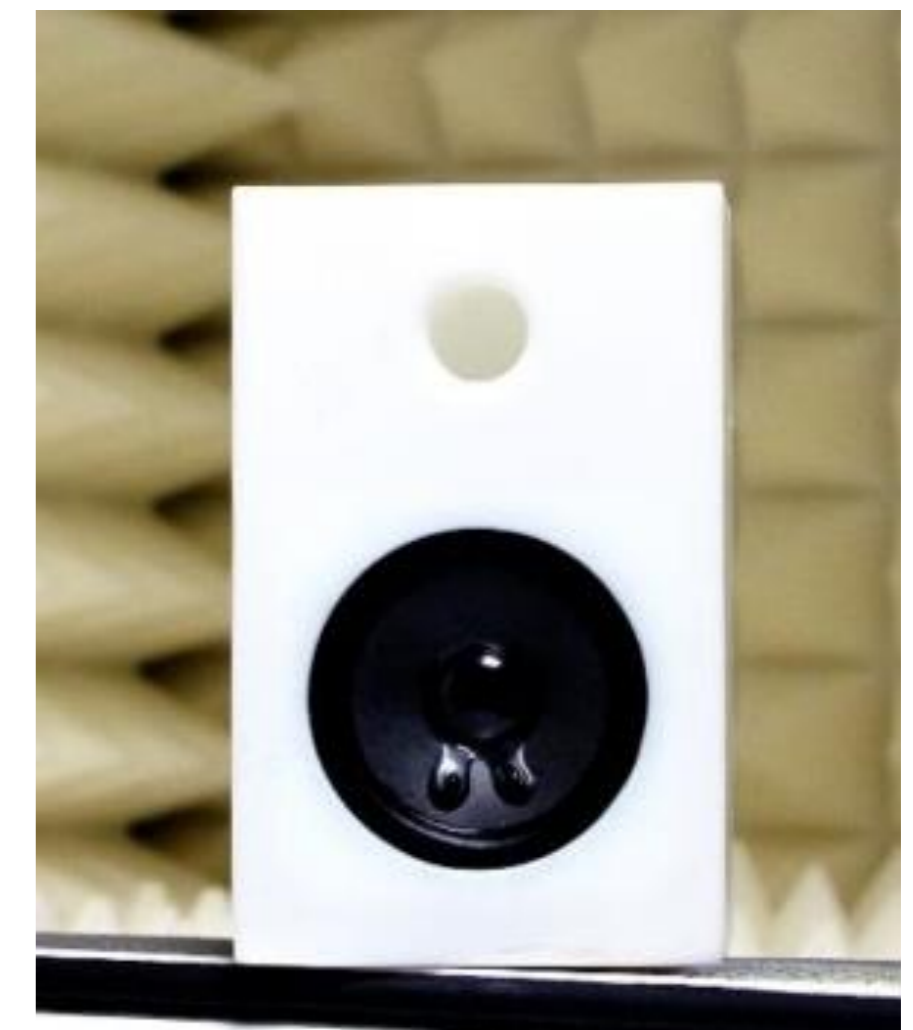
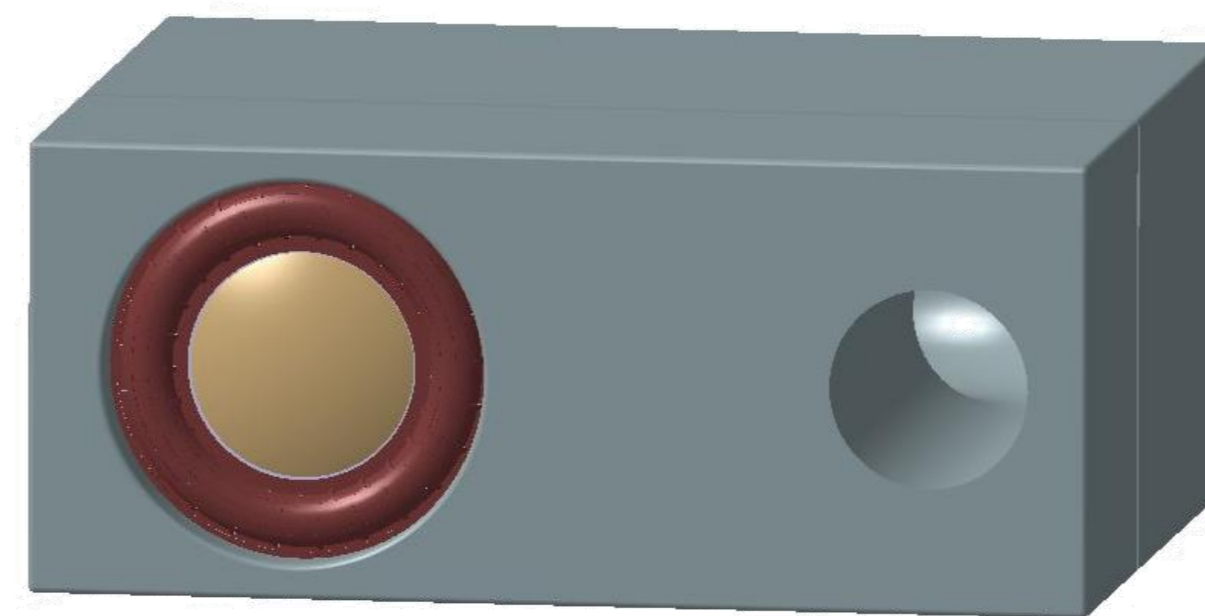
- Why implement a bass reflex?
 - Boost the bass response below the loudspeaker resonant frequency
- Custom Design
 - Add a tube (port) in the speaker box
 - Design of the port provided by SELTECH acoustic engineers



Simple speaker box



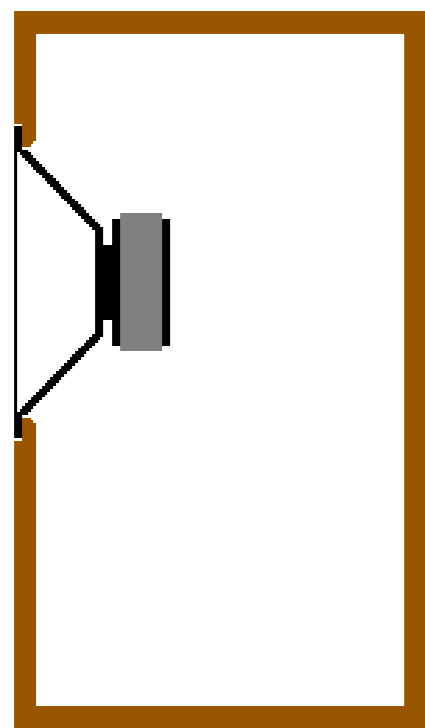
Speaker box with bass reflex



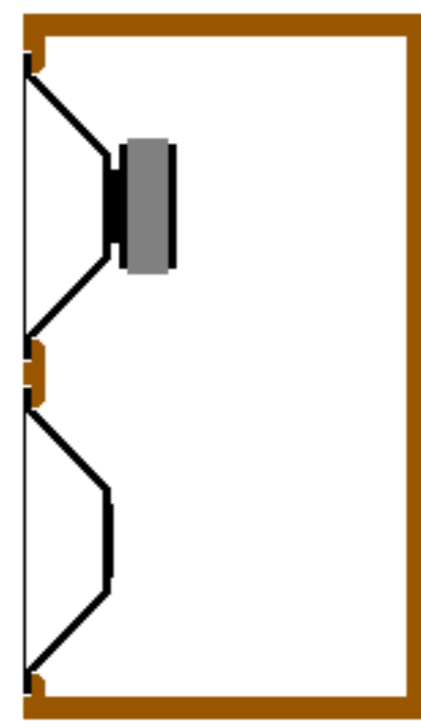
IMPROVED PERFORMANCES

Passive radiator implementation

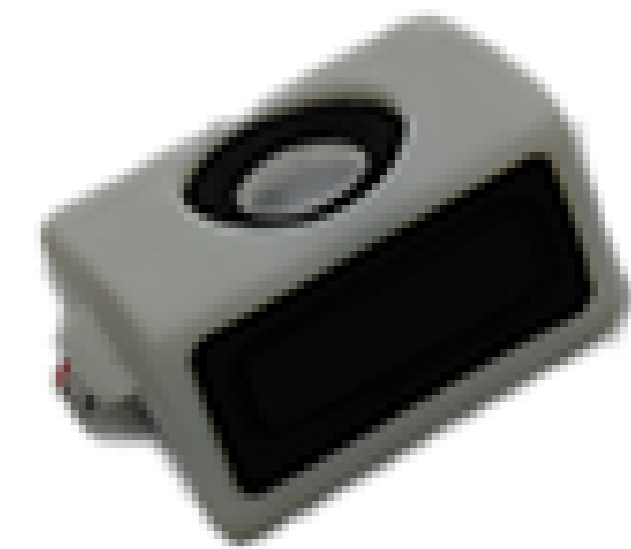
- Why implement passive radiator(s)?
 - Enhance a specific resonant frequency
- Custom Design
 - Easier to tune for that specific resonant frequency
 - SELTECH can design and provide the optimal passive radiator system



Simple speaker box



Speaker box
with passive radiator

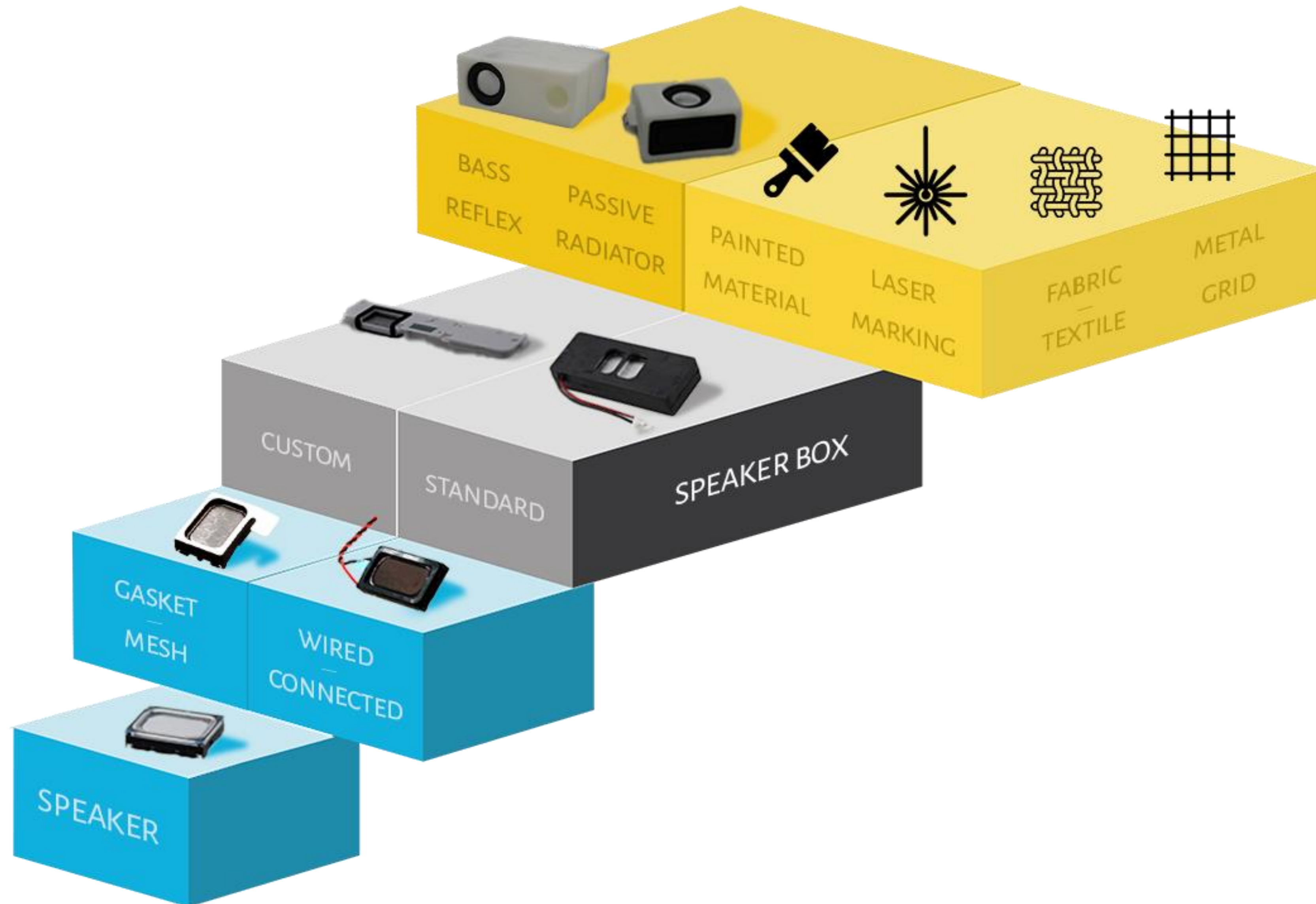


Speaker box
with 31mm speaker and
one passive radiator





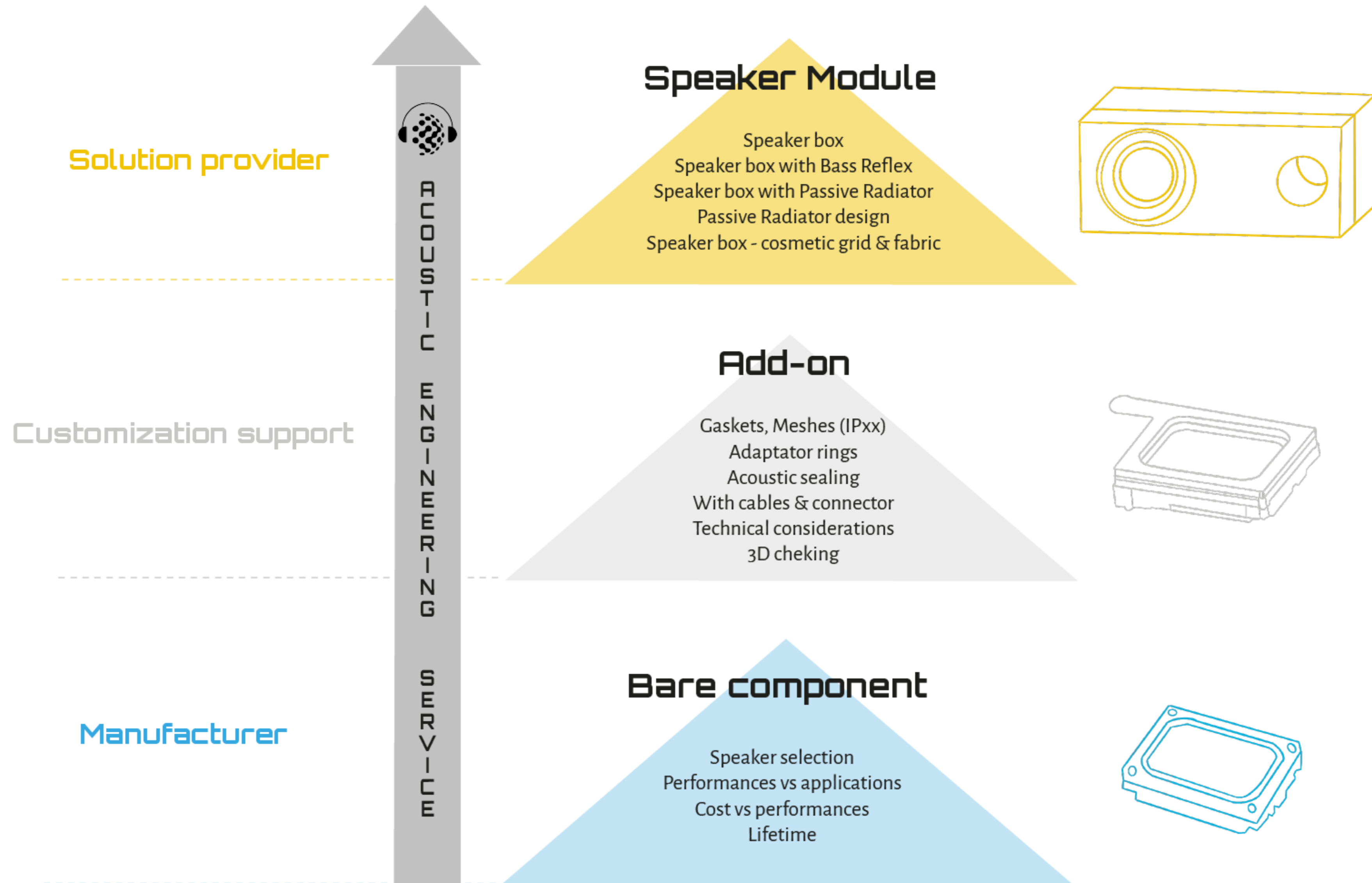
INTEGRATION STEP



02 HOW TO MAKE IT REAL



SPEAKER DESIGN FLOW CHART



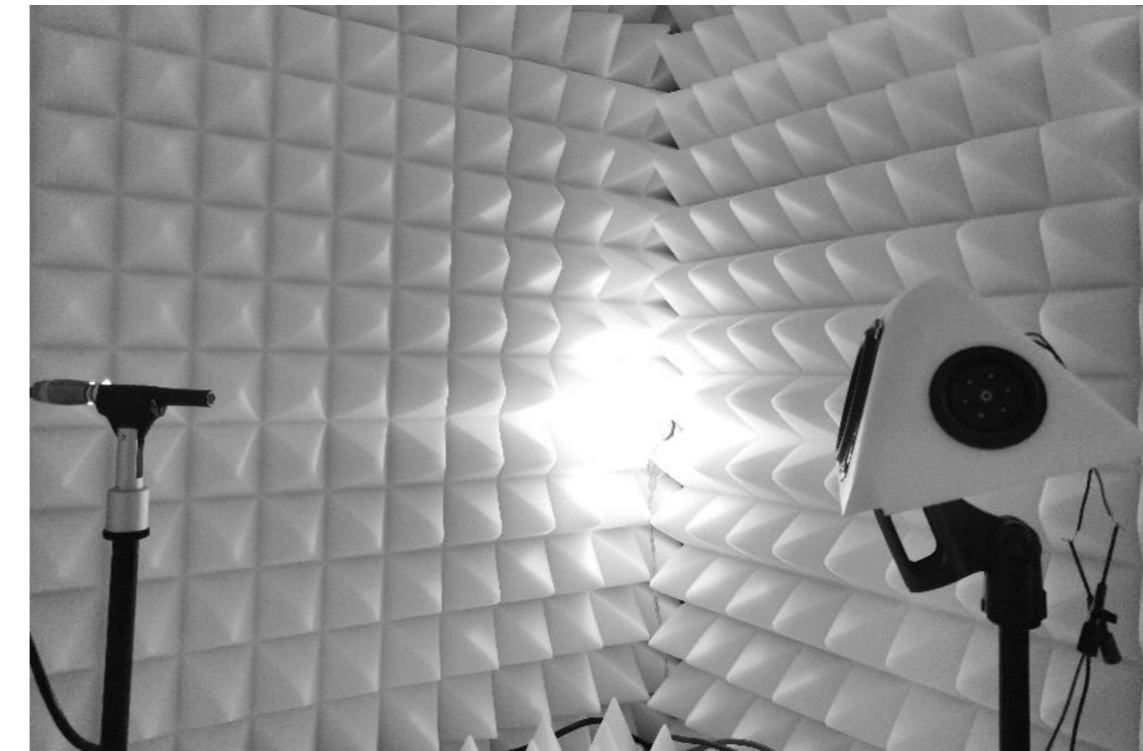


TESTS (Development & Production)

- Fully equipped labs



Anechoic chamber – SELTECH China

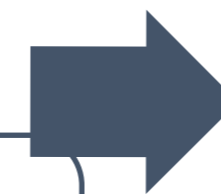


Anechoic chamber – SELTECH France

- Two steps to ensure premium quality

Step 1: Function test : 100% function test in line

- No short-cut test
- Function test on all speakers and components



Step 2: Acoustic test : AQL-II acoustic test in OQC

- Seltech design test jig
- Seltech design calibration jig
- Up to pre-production phase
- Verification of the process stability



COMMITMENT

Customer Satisfaction



Quality products

Reliable products

Custom design

Product support

Manufacturing flexibility

On-time deliveries



THANKS!

Find us on:



seltech-international.com